

1cm seam allowance included

Slouch Bag FACING



Cut 2

1A

1B

1B

1C

2A

2B

2B

2C



Slouch Bag OUTER

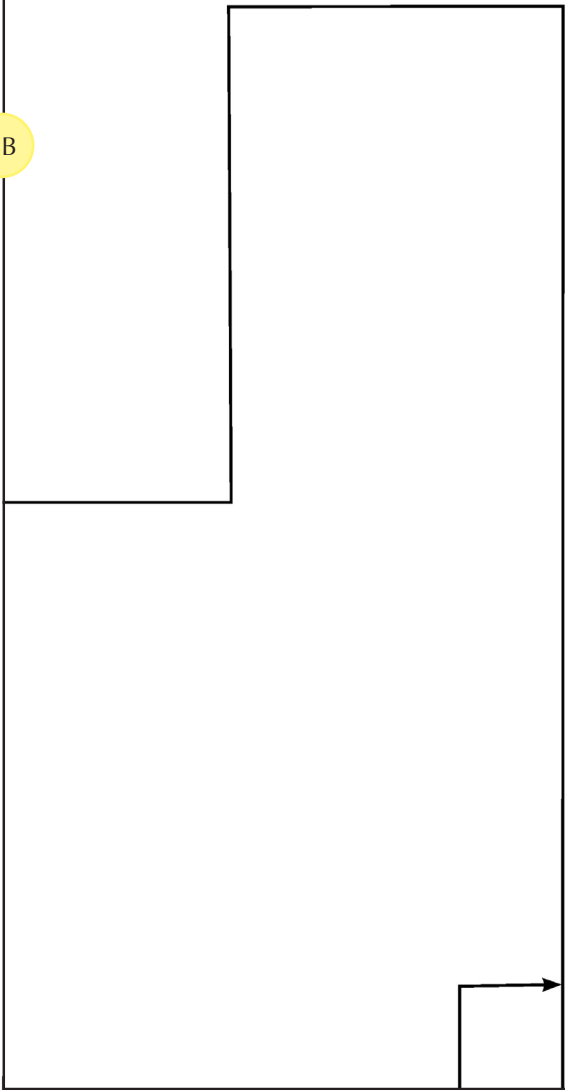
1cm seam allowance included

Cut 4

3A

3B

3B



3C

DIFFERENT

Slouch Bag LINING

1 cm seam allowance inc

Cut 2

4A

4B

cluded

FOLD

4B

4C