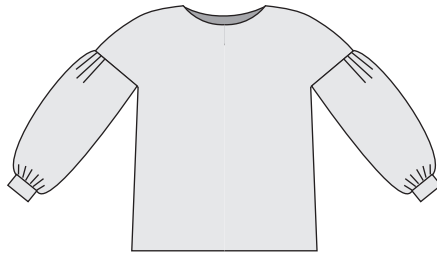


TEST SQUARE FOR PDF PRINTING  
This square should print out at 10cm x 10cm  
(4 inches)

If it doesn't print to the correct size, check that  
your printer is set to scale 100%

If you need any help putting this pattern  
together please see:  
[sewdifferent.co.uk/downloadable-patterns-work/](http://sewdifferent.co.uk/downloadable-patterns-work/)



# SLOUCH TOP

FREE pattern from Sew Different



1A

1B

Find a full tutorial on Youtube from

*Stitchless TV*

# SIZING

## Finished Garment Measurements

SIZE	XS	S	M	L	XL
centimetres					
BUST					
WAIST					
HIPS					

UK SIZE	8	10	12	14	16	18	20	22	24	26
US SIZE	4	6	8	10	12	14	16	18	20	22
EUROPE	36	38	40	42	44	46	48	50	52	54
Measurements in centimetres										
BUST	84	88	92	96	100	104	110	116	122	128
WAIST	68	72	76	80	84	88	94	100	106	112
HIPS	92	96	100	104	108	112	117	122	128	134
Measurements in inches										
BUST	33	34 1/2	36	37 3/4	39 1/2	41	43 1/4	45 3/4	48 1/4	50 1/4
WAIST	26 3/4	28 1/4	30	31 1/2	33	34 1/2	37	39 1/2	41 3/4	44
HIPS	36 1/4	37 3/4	39 1/2	41	42 1/2	44	46	48	50	52 1/2

SIZE: EXTRA SMALL      UK8 -10      US6      EUROPE 38

SIZE: SMALL      UK12 - 14      US10      EUROPE 42

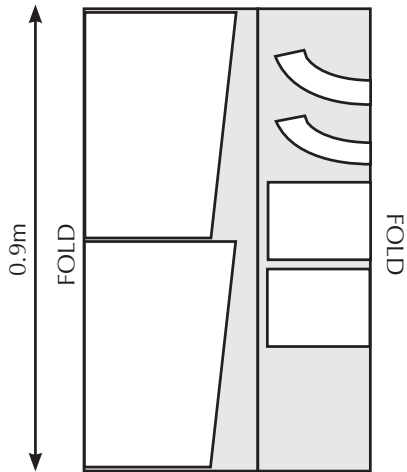
SIZE: MEDIUM      UK16-18      US14      EUROPE 46

SIZE: LARGE      UK20-22      US18      EUROPE 50

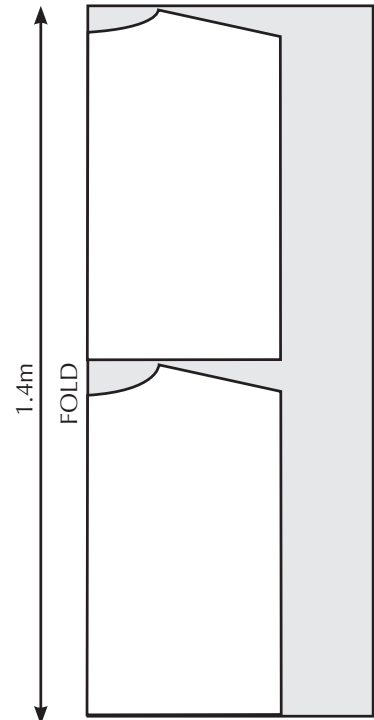
SIZE: EXTRA LARGE      UK24-26      US22      EUROPE 54

## FABRIC LAYOUTS

Fabric 112cm / 45 inches wide  
**ALL SIZES TOTAL FABRIC NEEDED**  
 2.3m / 2.5yds



Fabric 112cm / 45 inches wide  
 All sizes



Fabric 112cm / 45 inches wide  
 All sizes

1C

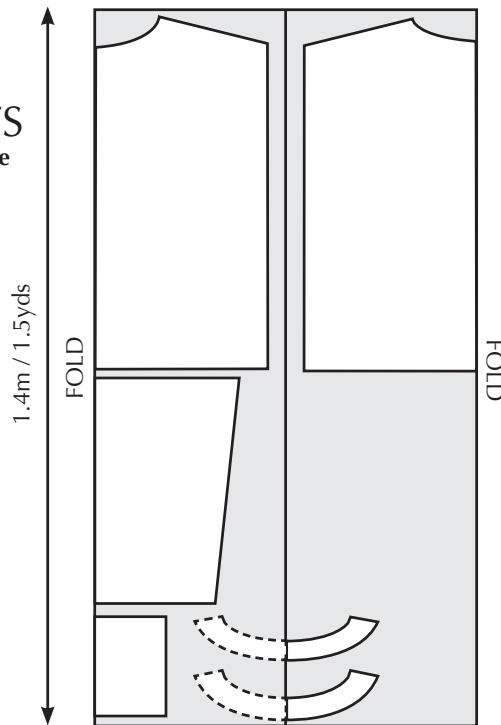
1D

## FABRIC LAYOUTS

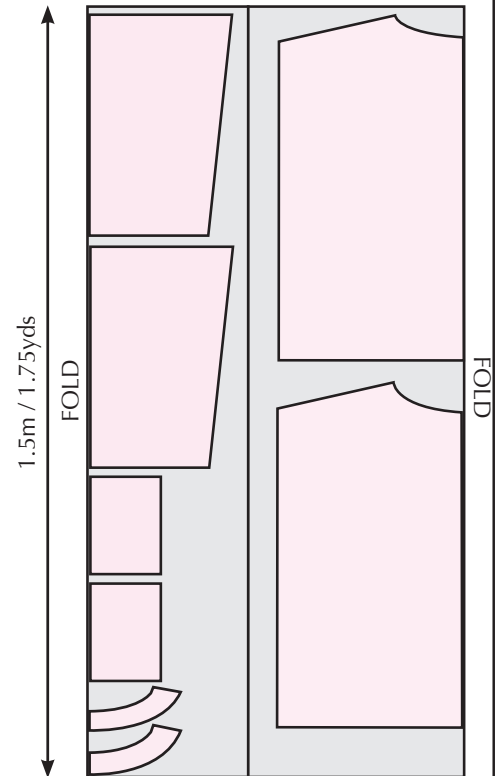
Fabric 150cm / 60 inches wide

Sizes XS, S, M, L:  
**TOTAL FABRIC NEEDED**  
 1.4m / 1.5YDS

Sizes XL  
**TOTAL FABRIC NEEDED**  
 1.5m / 1.75YDS



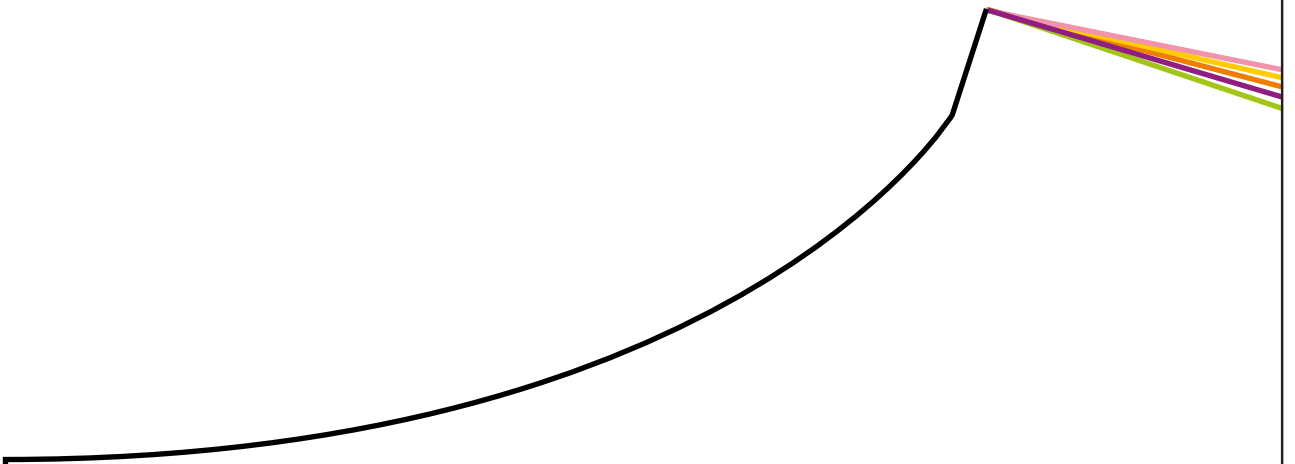
Fabric 150cm / 60 inches wide  
 Sizes XS, S, M, L



Fabric 150cm / 60 inches wide  
 Sizes: XL

## INSTRUCTIONS

- 1 - With right sides together, join the FRONT and BACK across the shoulder seam
- 2 - Gather the head of the SLEEVE between the solid black notches inside the seam allowance.
- 3 - Gather the cuff-end of the SLEEVE to fit the CUFF
- 4 - Fold the CUFF in half with wrong sides together along the dashed line. Stitch the double-thickness long edge of the CUFF to the gathered SLEEVE end.
- 5 - With right sides together, stitch the SLEEVE to the FRONT/BACK between the coloured notches
- 6 - With right sides together, join the FACINGS together along the short edges
- 7 - With right sides together, stitch the FACINGS to the neckline of the FRONT / BACK
- 8 - Clip notches into the seam allowance of the neckline. Fold the facings inside so that they sit wrong side together with the garment and topstitch the neckline.
- 9 - With right sides together, stitch the FRONT and BACK together along underarm and down the sides
- 10 - Hem the bottom with a 1.5cm turn



2A

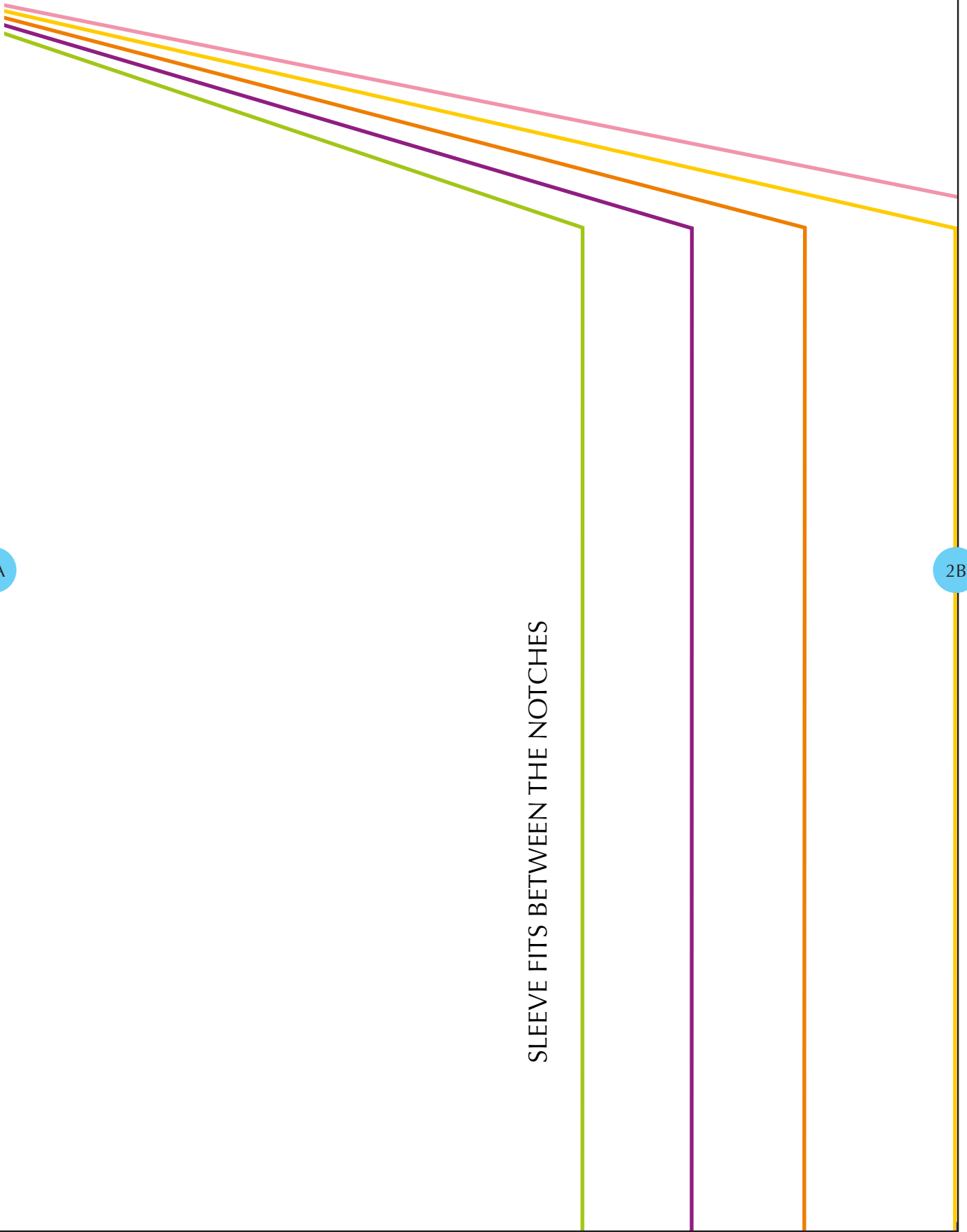
*Sew*   
DIFFERENT

SLOUCH TOP  
FRONT

2A

2B

SLEEVE FITS BETWEEN THE NOTCHES



2B

2C

Se  
E

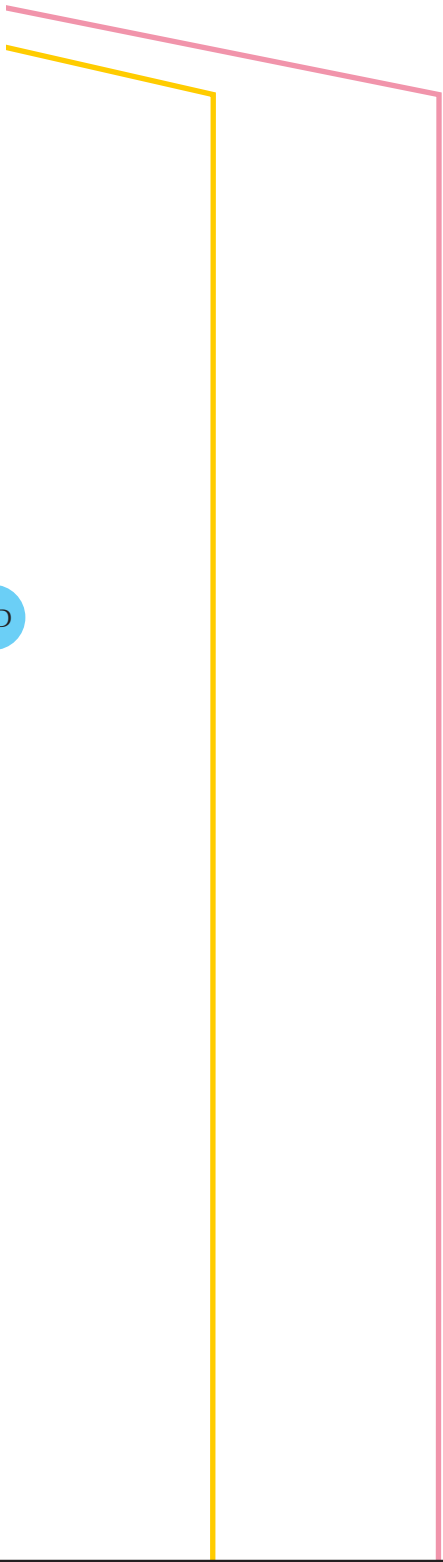


2C

2D



2D



Cut 1 on folded fabric  
1.5cm seam allowance include

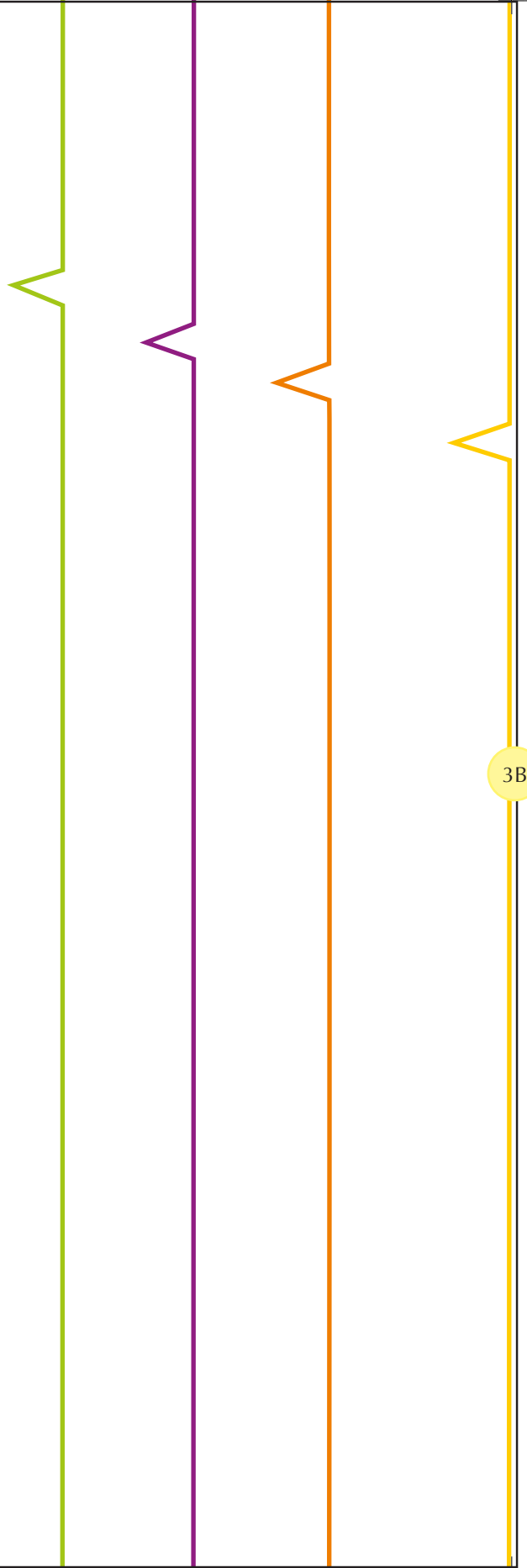
CUT ON FOLDED FABRIC



d

3A

3B



SLO

1

Cut 1 o  
1.5cm seam

CUT ON FOLDED FABRIC

3B

3C

# SLOUCH TOP BACK

1/2 folded fabric  
allowance included

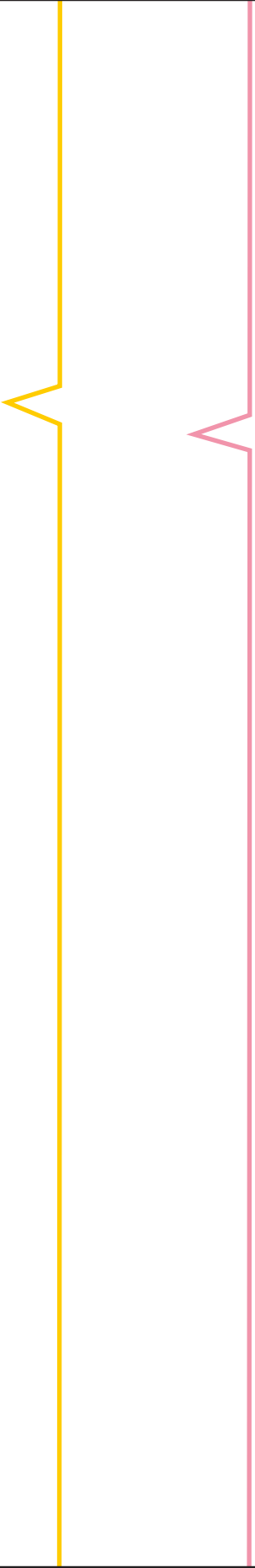
3C



3D



3D





4A

1.5CM HEM



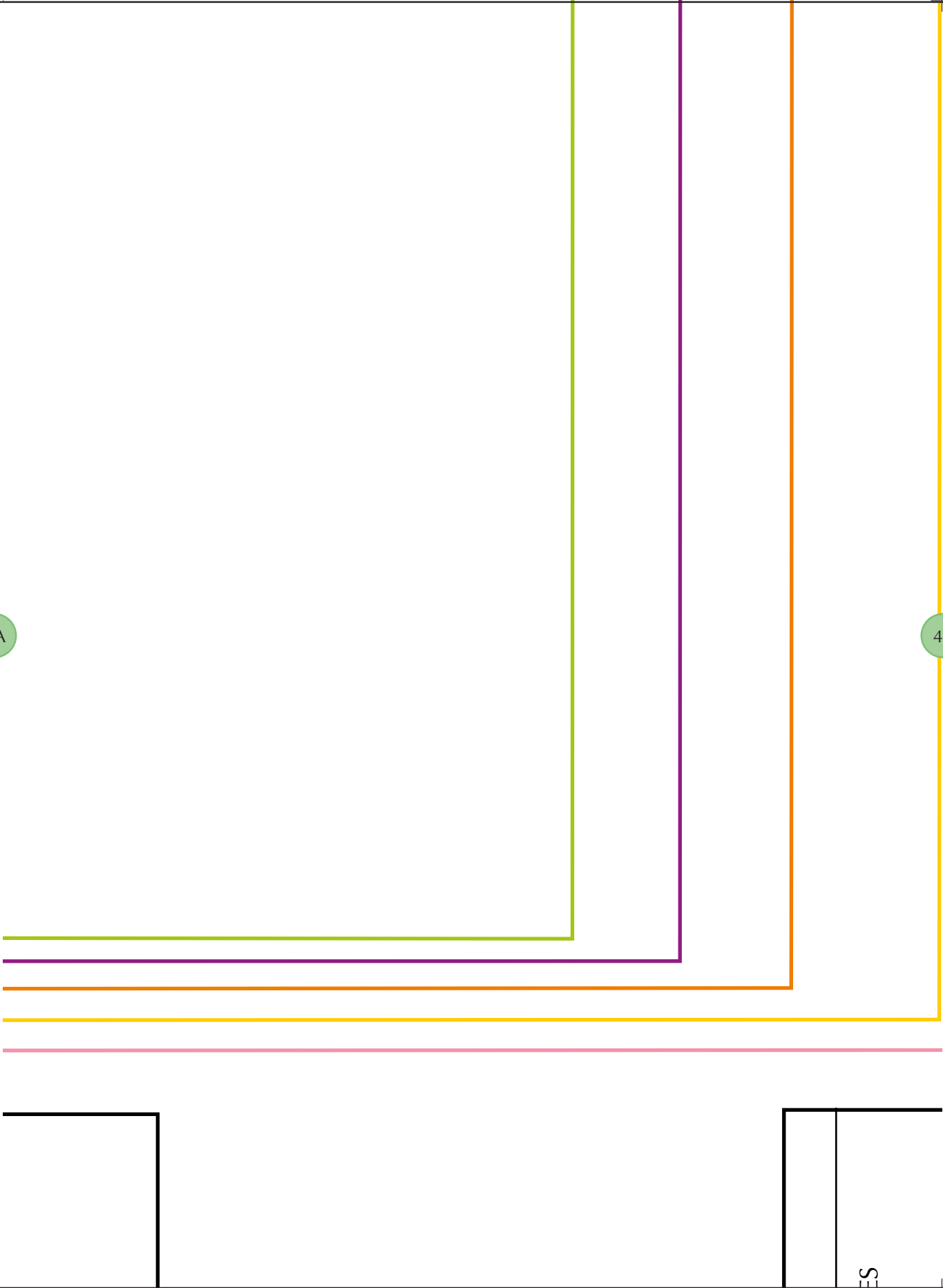
CUT ON FOLDED FABRIC





4A

4B



ES

4B

4C



CUT

4C



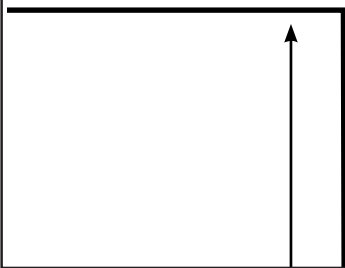
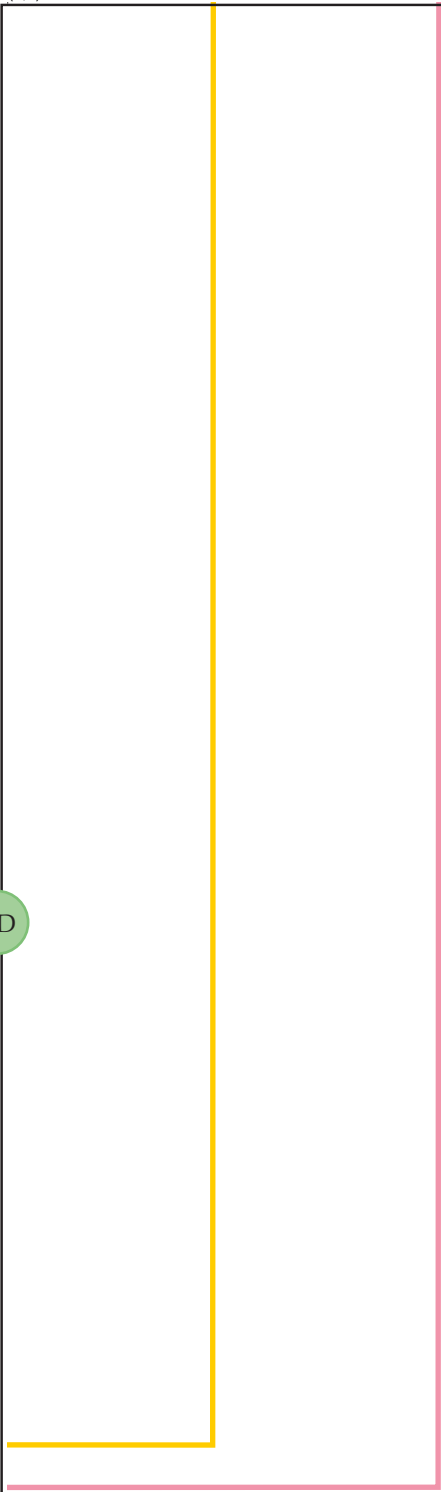
4D



ON FOLDED FABRIC



4D





OLD CUFF WRONG SIDES TOGETHER

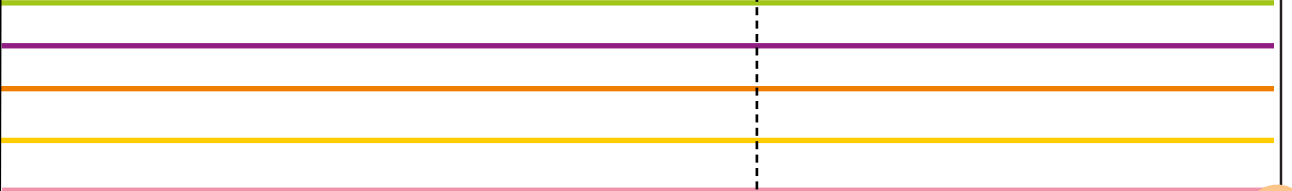


SLOUCH TOP

CUFF

Cut 2 on folded fabric  
1.5cm seam allowance included

THIS EDGE ATTACHES TO SLEEVE



5A

SLOUCH TOP  
FRONT FACING

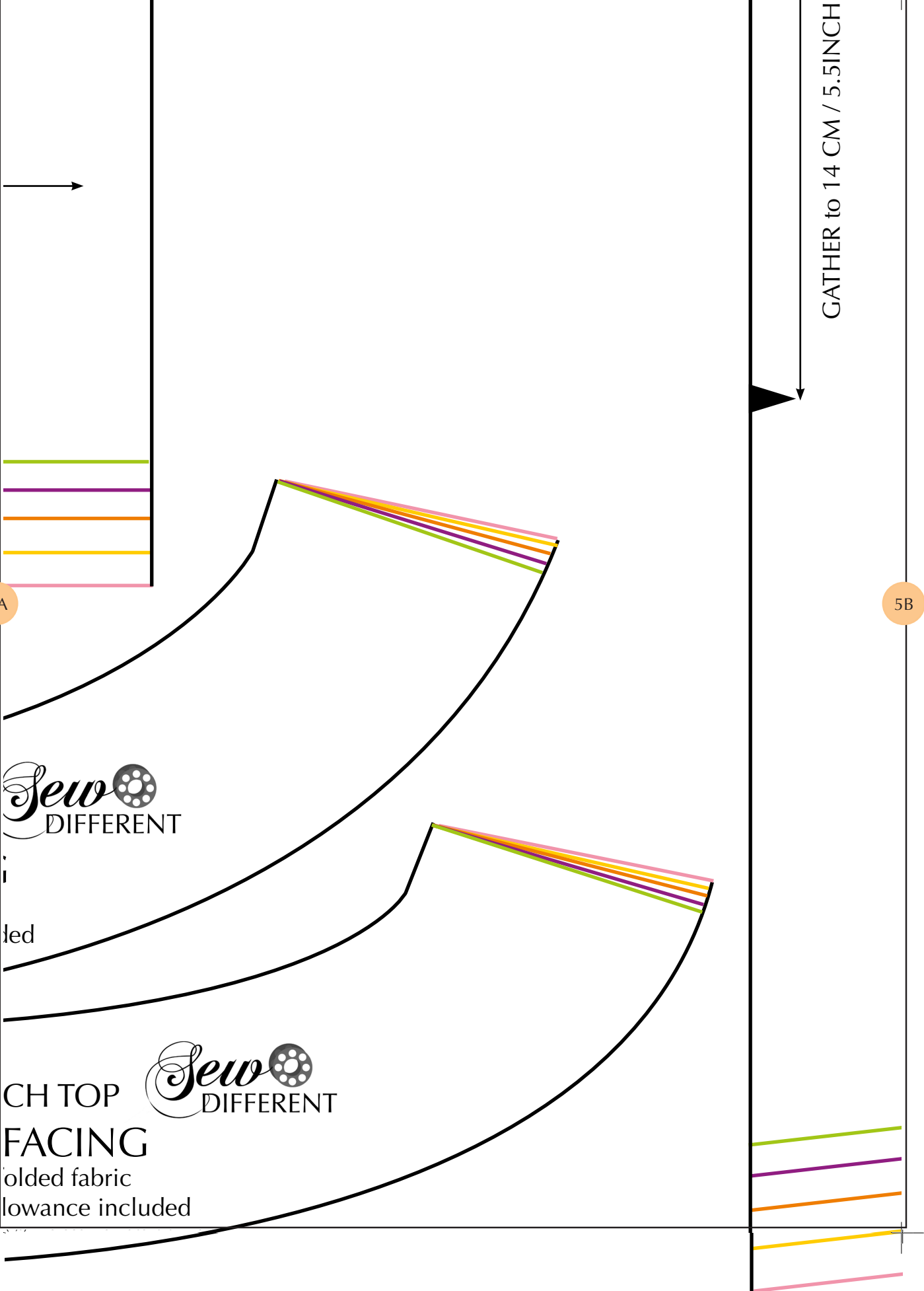
Cut 1 on folded fabric  
1.5cm seam allowance included

CUT ON FOLD

SLOUCH  
BACK

Cut 1 on  
1.5cm seam allowance

CUT ON FOLD



5A

5B

*Sew* DIFFERENT

led

*Sew* DIFFERENT

CH TOP  
FACING

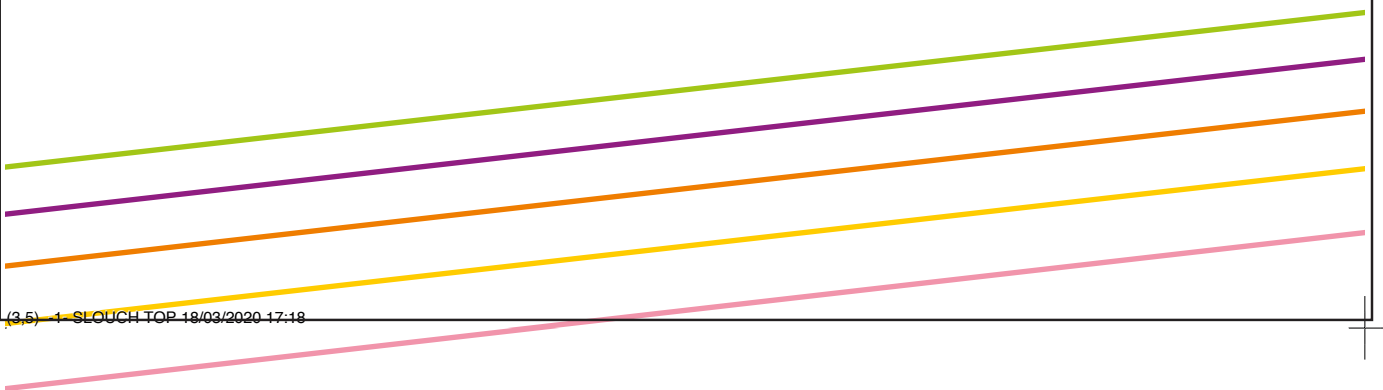
folded fabric  
allowance included

GATHER to 14 CM / 5.5 INCH

5B



5C



# SLEEVE

5C

Cut 2 on folded fabric  
1.5cm seam allowance included

5D





5D

GATHER TO FIT CUFF

